

CUSTER
STATE PARK
RESORT

Adventure is Calling.

2025

Activities, Lodging,
Food & Retail

CusterResorts.com
888-875-0001



Table of Contents

Activities.....	4 - 7
CSP Map.....	8 - 9
Lodging.....	10 - 11
Camping.....	12 - 13
Food & Retail.....	14 - 15
Scenic Drives.....	16

Buffalo are dangerous.
Please do not approach.

Custer State Park Visitor Center

Custer State Park's visitor center is open year-round except major holidays and offers an array of exhibits which include a large interactive map, 20 foot scale model of the Needles Formations, and displays depicting the natural world of the Park. Numerous displays showcase the park's iconic inhabitants, the buffalo, and a state-of-the-art theater features a 20 minute movie narrated by Kevin Costner. The Visitor Center is located just east of the State Game Lodge at the junction of the Wildlife Loop Road and US 16A.

Park Entrance Fees

An entrance license is required for all park visitors. Only people traveling non-stop on U.S. Highway 16A and south Highway 87 are exempt from this requirement. Entrance licenses are valid at all South Dakota State Parks.

Temporary 1-7 days	\$25 / vehicle
Motorcycle.....	\$20 / motorcycle
Annual	
Resident.....	\$40
Non-Resident	\$60
Two Annual	
Resident.....	\$60
Non-Resident	\$90
Transferable	
Residents Only.....	\$90
Motorcoach.....	\$4 / person per visit
	<i>Valid only at Custer State Park</i>



Buffalo Safari Jeep Tour plus Chuck Wagon Cookout

State Game Lodge / 605-255-4541

Reservations Required By 2:00 p.m.

Departure at 4:00 p.m. each night from Creekside Lodge. Two adventures in one! Start with your guided off-road Buffalo Safari Jeep Tour, then meet up with the Chuck Wagon Cookout. Driver brings you back when you are done. Exact departure time varies by season. Back around dark.

Adults: \$149 / person

Children (11 & under): \$129 / person



Scan to
book online



ACTIVITIES

Hayride Chuck Wagon Cookout Blue Bell Lodge

- Reservations Required. Book online by scanning the QR code.
- Arrive at Blue Bell Lodge by 4:30 p.m.
- Departure at 5:00 p.m. Arrive back at 8:00 p.m.

A vehicle-drawn hay wagon takes you on a **45-minute scenic wildlife tour** before stopping in a mountain meadow canyon for a chuck wagon feast and a live folk band dinner show. A souvenir cowboy hat and bandanna for each paying guest.

CHUCK WAGON COOKOUT MENU

- An 8 oz. choice sirloin steak or a 1/3 lb. hamburger entrée (Vegetarian option available)
- Cowboy Beans / Cornbread / Potato Salad / Coleslaw / Watermelon Cookies / Coffee / Lemonade

Adults: \$78 / person

Children (11 & under): \$64 / person

Children 3 years and under: Free (If they sit on a parent's lap on the ride and eat from a parent's plate.)

Buffalo Safari Jeep Tour State Game Lodge

- Reservations Required. Book online by scanning the QR code.
- 1-1.5 to 2 Hour Tours
- Departing 6 a.m. thru 6 p.m.

Driver/guide takes you where only they are permitted - off-road - to provide historical and educational information about the park and wildlife on this scenic tour of the backcountry. Named "Top 10 Safaris in the US" by MSN.

Adults: \$74 / person

Children (11 & under): \$62 / person

Book a Private Tour or Sunrise Safari!

See online for details.



Scan to
book online



ACTIVITIES

Boat & Water Sport Rentals (First-come, First-served)

Legion Lake Lodge / 605-255-4521

Sylvan Lake Lodge / 605-574-2561

- All persons under 18 years of age must have an adult sign for rental with adult supervision while in the water.
- Life jackets are furnished and required to be worn.
- Stand-Up Paddle Boards
- Canoes & Kayaks

Half Hour: \$12 / person

1-Hour: \$20 / person

Horseback Trail Riding

Blue Bell Lodge Stables

605-255-4700

- Reservations required. Book online.
- Arrive 30 minutes prior to scheduled trail ride to complete the required paperwork.
- Children must ride alone and meet minimum safety requirements.

Lil' Buckaroo Ride: \$20 / person
Children 11 & under

1-Hour Trail Ride: \$75 / person
Adults & Children 5+

For 2-Hour, Half and Full-Day Rides:
See online for details.

Custer State Park

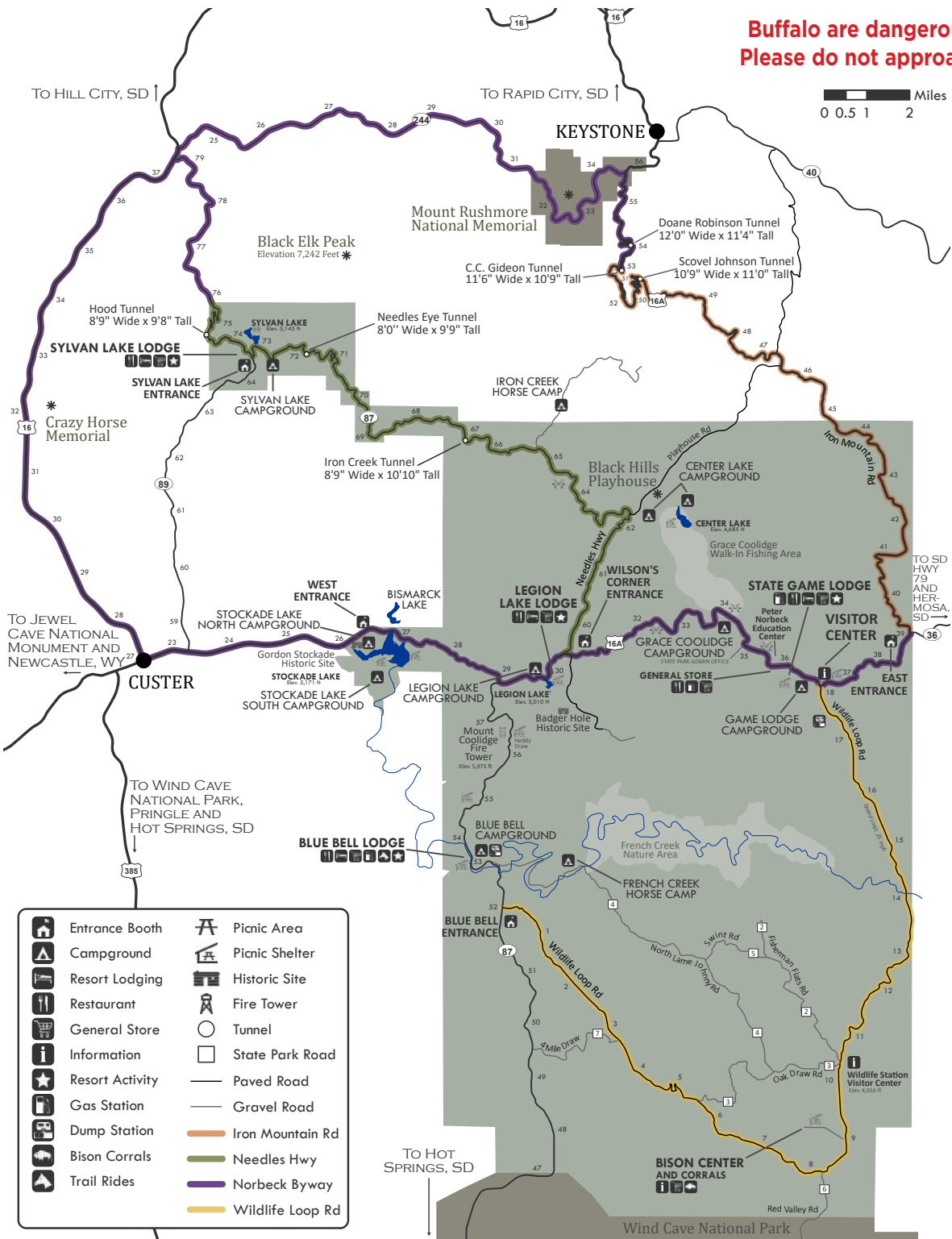
JR. Naturalist Program

Kids explore the great outdoors in this hands-on educational program. Visit the Peter Norbeck Outdoor Ed Center to start earning your patch.

Naturalist Programs

Throughout the summer, our naturalist programs are designed to enrich your experience. Ask about what programs are taking place at any visitor center.

**Buffalo are dangerous.
Please do not approach.**



- | | | | |
|--|-----------------|--|------------------|
| | Entrance Booth | | Picnic Area |
| | Campground | | Picnic Shelter |
| | Resort Lodging | | Historic Site |
| | Restaurant | | Fire Tower |
| | General Store | | Tunnel |
| | Information | | State Park Road |
| | Resort Activity | | Paved Road |
| | Gas Station | | Gravel Road |
| | Dump Station | | Iron Mountain Rd |
| | Bison Corrals | | Needles Hwy |
| | Trail Rides | | Norbeck Byway |
| | | | Wildlife Loop Rd |



LODGING

All sleeping units are climate-controlled and fully furnished with flat screen TVs, refrigerators, microwaves, and coffee pots. Sleeping and housekeeping cabins available; select units feature full kitchens, fireplaces, and decks.

Blue Bell Lodge

- » 30 Cabins
- » **SPECIALTY CABIN*** :
Ponderosa Cabin (sleeps 24)

Legion Lake Lodge

- » 27 Cabins

State Game Lodge

- » 47 Lodge Rooms - double queen and king guestrooms that have been recently enlarged, and several historical suites
- » 28 Cabins
- » **SPECIALTY CABINS*** :
[both year-round]
Reunion Cabin (sleeps 28)
Tatanka Cabin (sleeps 24)

Creekside Lodge [on the SGL grounds]

- » 30 oversized lodge rooms - double queen junior suites. Upgrade to private patio or deck.
- » Open year-round

Sylvan Lake Lodge

- » 35 Lodge Rooms - queen, double queen, king and suites. Elevator available in lodge.
- » 31 Cabins
- » **SPECIALTY CABIN*** :
Cathedral Spires Cabin (sleeps 20)

**Our Specialty Cabins* offer a luxury unit, fully furnished, complete with designer kitchens, four bedrooms, five bathrooms, stone fireplaces, peaceful decks, and unforgettable views!



CUSTER STATE PARK

CusterStatePark.com
custerstatepark@state.sd.us

CAMPING

800-710-2267 • CampSD.com

A South Dakota State Park Entrance License is required.

Some photos courtesy SD Tourism

CAMPING

Unpack and unwind beneath the stars in one of Custer State Park **9 campgrounds**. You'll find campsites and camper cabins near fresh flowing streams, mountains lakes, or in the midst of a ponderosa pine forest. Reservations can be made up to one year in advance in all campgrounds, except Center Lake Campground, which offers "same day reservations". Reservations can be made at www.CampSD.com or by calling 1-800-710-2267. Go to www.CusterStatePark.com for more information on camping and reservations.

Camping fees, plus tax, range from \$16.00 to \$44.00 depending upon location. Camper cabins run \$60.00 a night plus tax. Camping fees are collected in full at the time the reservation is made.

Most campgrounds offer electric sites and, all but Center Lake, have modern comfort stations (showers and flush toilets). Center Lake has showers and vault toilets. A dump station is located on the east side of the Park near the Park's Visitor Center at the beginning of the Wildlife Loop Road as well as at Blue Bell Campground located on Hwy 87 South.

Specialty campgrounds include French Creek Horse Camp for horse campers only as well as two group campgrounds and two non-profit youth campgrounds.

Evening programs are offered by Park Naturalists at the Game Lodge, Center Lake, Stockade North and Blue Bell Campgrounds on most evenings from Memorial Day through Labor Day. Schedules are posted weekly on campground bulletin boards.



Some photos courtesy Travel South Dakota

FOOD & RETAIL

All four restaurants serve breakfast, lunch and dinner.

Blue Bell Lodge 605-255-4531

Comfortable Old West saloon-style setting. Specialty burgers and sandwiches, salads, buffalo, walleye and steak. And the Best Bloody Mary in the West! Peaceful patio overlooking French Creek!

Legion Lake Lodge 605-255-4521

You'll enjoy the lakeside patio and deck or stay indoors and enjoy our unique dining experience with a view second to none. From specialty malts and coffee; full service breakfast selections, specialty burgers, flatbread pizzas, broasted chicken, nightly features and Happy Hour with draft beer and snack specials!

State Game Lodge 605-255-4541

Eloquently historical with special menu items and drinks. Entree selections highlight local game such as, pheasant, buffalo and elk. Reservations recommended.

Sylvan Lake Lodge 605-574-2561

Fantastic forest views indoors and outdoors. Exquisite cuisine featuring buffalo, walleye and Wapiti (elk) osso bucco. Accompanied by an extensive hand selected wine library. Reservations recommended.

CONVENIENCE STORES, GIFTS & SOUVENIRS

All Lodges have a gift shop or store. The largest, Coolidge General Store, is a short distance from the State Game Lodge. All are stocked with:

- Apparel for the whole family
- Quality bison and wildlife items
- Personal care products
- Groceries and beverages (beer and wine at some locations)
- Grab-and-go food
- Camping, fishing supplies and fishing licenses



CusterResorts.com
888-875-0001

SCENIC DRIVES

Twist and turn your way along the famous Needles Highway where giant columns of granite pierce the skyline. Or witness Mount Rushmore National Memorial on a breathtaking drive on Iron Mountain Road. Experience the Park's Wildlife Loop Road where you might come face to face with the Park's buffalo, a band of burros, or one of the many other critters often seen along the roadway.



CUSTER STATE PARK RESORTS **Lodges and Activities**

A South Dakota State Park Entrance License is required.
Many photos are courtesy South Dakota Tourism.